



RV ***AMERICA***

\$3.00 US/\$4.00 Canada
www.RVAmericaMagazine.com

OFFICIAL PUBLICATION OF THE PASSPORT AMERICA CLUB

Dec/Jan/Feb 2020 RVA68

**Life From
Every Angle ...**

**Christmas
Snowball Cookies**

**ELEVATE RED CREEK,
PERKINSTON, MS**

**CUMBRES TOLTEC
RAILROAD**

**Jetstream RV Resort,
Webster, TX**



Refer-A-Friend, Get Holiday CASH & Win Weekly Prizes!



\$250.00 - Love's Gas Card
Most Referrals



Cracker Barrel Cards



Amazon Store Cards



Passport America
Memorabilia & More!

**** Every referral is an entry for a chance to win. 1 of 12 Weekly Prizes! ****

Member Testimonial: "Dear Passport People - WOW! Thank you very much for the \$500.00 Love's Gas card. I'm pretty much blown away and most certainly appreciate your generosity." - Sincerely, Josh Tousdale (GS-557813)

Season's Greetings! Earn extra cash for the holidays with our **Holiday Member Referral Program that Pays**. Simply pass along our brochure/flyer(s) to fellow friends and RVers throughout your holiday travels. For everyone who joins with your Member name and/or ID# between **November 6th and January 31st, 2020**, you earn **\$10.00 CASH!** Plus, your referral will receive an additional **THREE MONTHS FREE, compliments of you**, added to their card.

Pass along the gift of savings this holiday season and have your friends sign up today at www.passportamerica.com. For faster service, call us toll free at **1-800-681-6810**. This is just our way of saying **"Thank You"** for helping us grow! **Need additional brochures?** Call or email us today.

Hurry, Special Referral Program Expires: January 31, 2020

*Once a member is entered into our database, we cannot change the referral code. Offer not valid through 3rd party partners and cannot be combined with any other offers or referral codes. Must be a valid member in good standing to qualify for cash prizes and giveaways.

Winners Posted on our Social Media • Like/Follow Us Now to stay posted!



SOUTHWESTERN CORE OF AMERICA

Grandeurs of THE WILD, WILD WEST

*Grand Canyon,
Natural Wonder*

29-Day Guided RV Caravan DATES: April 24 - May 22, 2020

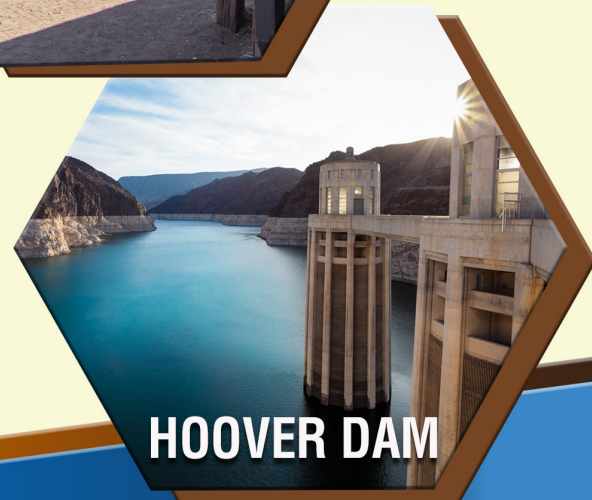
Your Wild West Adventure awaits you! Starting in Albuquerque, NM, we'll travel through the Southwestern territories with our expert Wagon Master and Tailgunners - experiencing the unique beauty of historic old western towns and viewing the hidden gems of the **WILD, WILD WEST**. Starting at only \$6300 for Two people/1 RV \$4100 for one person/1 RV

TOUR HIGHLIGHTS

- Sandia Peak Tramway
- Las Vegas Strip & Hoover Dam
- Carlsbad Caverns
- Grand Canyon National Park and Railway
- Tombstone and MUCH MORE!



TOMBSTONE, AZ



HOOVER DAM

Sign Up at www.PASSPORTAMERICACARAVANS.com

or Call **1-800-681-6810** NOW to Register!



- 4 EDITOR'S NOTES
- 5 SHOWS & RALLIES
- 5 FEEDBACK
- 6 CAMPGROUND HIGHLIGHT, **Jetstream RV Resort, Webster, TX**
- 7 CAMPGROUND HIGHLIGHT, **Elevate Red Creek, Perkinston, MS**
- 8 MY STORY: LIFE FROM EVERY ANGLE...
by **Barbara Oliver**
- 13 RECIPES FROM THE ROAD, **Christmas Snowball Cookies**
- 14 SALUTE TO LIFETIME MEMBERS
- 19 NEW CAMPGROUNDS
- 20 CAMPGROUND UPDATES
- 28 MY STORY: **CUMBRES TOLTEC RAILROAD**,
by **Lazelle Jones**
- 32 INSPIRATIONAL, **Christmas Story**
- 33 PRODUCT HIGHLIGHT
 - **Aero Shield Wind Deflector**
 - **LAP SEALANT**
- 34 MY STORY: **Louis L'Amour**, by **Barbara Oliver**
- 36 WHAT MONTH IS IT, ANYWAY?
- 36 ADVERTISING INDEX



8

Editorial Team

President/CEO/Publisher.....Vernon Simmons
 Editor/Graphic Designer April Fillingim
 Advertising Sales Dir National Marketing Corp.
 Software Engineer Randy Martin

RV America Contributors: Barbara Oliver, Lazelle Jones and all the Passport America members and businesses that have contributed to *RV America* magazine.

To carry *RV America* in your store, please call 1.800.681.6810 or send an e-mail to april@passportamerica.net.

Subscriptions: Basic rate is \$12 for one year (prices vary outside the U.S.). Single copies are \$3.00 each. Call 1.800.681.6810.

RV America magazine, published by Passport America/National Marketing Corporation, is published four times per year. Annual membership dues of \$44 include \$12 for a 1-year subscription to *RV America*. Non-members of Passport America may buy a subscription to *RV America* by calling 1.800.681.6810 or by mailing a check or money order to:

RV America Magazine
 5713 Hwy 85 North
 Crestview, FL 32536

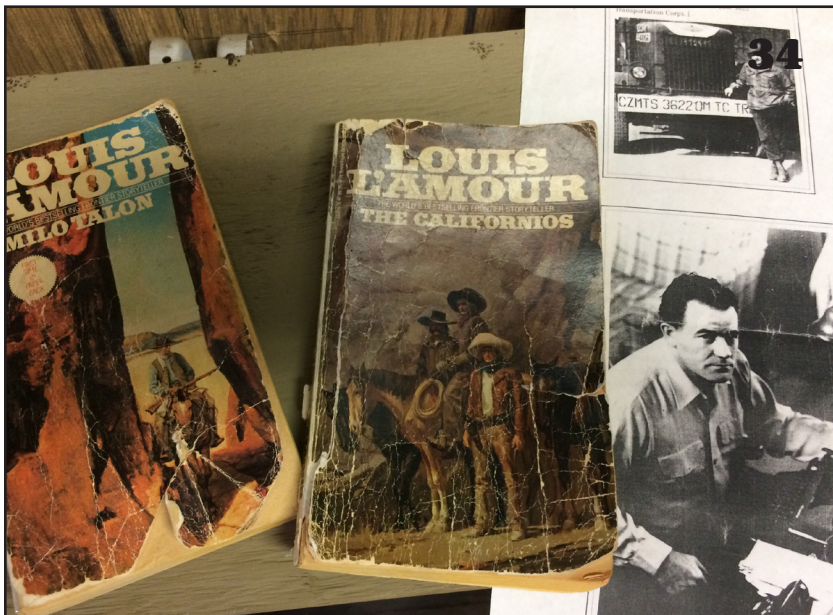
All submissions to *RV America* are considered. If return of material is required, a self-addressed, stamped envelope should accompany each submission.

The *RV America* Issue RVA68 Dec 2019 (ISSN 1541-7395) is published quarterly for \$12 per year by Passport America/National Marketing Corp., 5713 Hwy 85 North, Crestview, FL, 32536.

POSTMASTER:
 Send address changes to
RV America
 5713 Hwy 85 North
 Crestview, FL 32536

Annual membership dues of \$44 include \$12 for a 1-year subscription to *RV America*.

Next Issue:
Mar/Apr/May 2020



13



It's that time of year again. The weather is cooler, the days are shorter, and nights are longer. Winter has arrived. Christmas is just around the corner, so remember to spend time with the ones you love. Don't get so caught up in the rush of the season that you forget the real meaning of Christmas.

Take a look at Pages 6 and 7 that feature our "Campground Highlight" for the Jetstream RV Resort in Webster Texas and Elevate Red Creek in Perkinston, Mississippi. These are just two of our newest parks.

Barbara Oliver, Page 8, gives some insight of the life of George Eastman, an avid photographer, founder of the Eastman Kodak company.

Simply the easiest and the Best

traditional Christmas Snowball Cookie recipe – buttery with plenty of pecans and vanilla for a rich, flavorful, melt-in-your mouth shortbread cookie, Page 13.

Still haven't finished your Christmas shopping? Well, look no further! Give the gift that will make a special person in your life "smile big" whenever they "save big" using their Passport America gift membership. See Inside the back cover for details.

Great news! Our 29th edition of the Passport America International Camping Directory is being printed as I write! The new directories should start shipping in mid-January 2019. Passport America has more quality

campgrounds and resorts than ever, and we are growing daily!

As always, Passport America strives for excellence. If you have suggestions, comments, or feedback, please contact us. We are always happy to serve you. Please send your photos, feedback, stories, and "tips to share" to april@passportamerica.net.

Enjoy this season with your loved ones, and be sure to reflect on all the things for which you are thankful. Everyone at Passport America would like to wish you and your family a very Merry Christmas and a Happy New Year.

Till next issue, Happy Travels!

April Fillingim



We loved the Enchanted Trails RV Park & Trading Post in Albuquerque, NM — we extended our stay because we liked it so much—highly recommend you consider this park if you are in the area—it is an older park that has been maintained perfectly and the retro cars, campers, and other things from the past was a refreshing change—staff is awesome—would love to go back as this park is one of our favorites
- Linda Brill

Verde Ranch RV Resort, Camp Verde, AZ is a new park and is totally fabulous! Easy sites to pull into or back in also available. Has lots of amenities: hot tubs, pool, great clubhouse with pool table, shuffleboard, ping pong—they also have pickleball courts, but you have to either purchase your own equipment or bring your own. Internet and TV were great. Wonderful location that was close to everything we wanted to see—highly recommend this park; you will not be disappointed.
- Linda Brill

We stayed at North River Campground, Shawboro / Shiloh, NC for 5 days in October 2019. Probably the cleanest and most well-kept park we have used so far! Sites are spacious and very well thought out, providing a level, gravel surface with an attached 20-foot concrete slab! Some sites

are 50 amp only so you may need an adapter for 30 amp. Has a small lake in the center surrounded by sites. Fishing, swimming, and boat rentals. Fresh pizza made and wings in the camp store. Also, propane, ice, and much, much more. They also have themed nights in the screened pavilion featuring live entertainment and foods. Call ahead and get the schedule. Gated access is provided.
-Bob Edwards

We really like Blaze-In-Saddle RV Park, Tucumcari, NM — awesome folks and well set up park. Dog walk area on site and close by. Tucumcari has some very interesting places to visit and great places to eat — try Watkins BBQ. Make this a place to spend a few days at you will be busy enjoying the town and local sights.
- Heidi Still

We just returned from a 6 week trip. Our savings paid our dues 3 times over. We also found out that Passport America is the most respected of the 'half off' discount clubs. We have 2 others, but will not renew them.

- Rev. Arlen Jones



SHOWS/RALLIES

2020 FLORIDA SUPER SHOW

Tampa, FL
January 15 - 19, 2020

FMCA WESTERN AREA RALLY

Indio, CA
January 8 - 12, 2020

2020 FORT MYERS RV SHOW

January 23 - 26, 2020

FMCA SOUTHEAST AREA RALLY

Lakeland, FL
February 5 - 8, 2020

OCALA RV SHOW

Feb 27 - Mar 1, 2020

FMCA'S 101ST INT'L CONVENTION

Tucson, AZ
March 26 - 29, 2020

Welcome New Park

Jetstream RV Resort Webster, TX



Jetstream RV Resort at NASA is an exciting, new RV resort in South Houston, Texas. Guests will enjoy a trendy environment that fuses supreme convenience with stellar amenities geared toward those who are living large and loving it.

Live life to the fullest while having your comfort zone with amenities that include: 30/50 amp, pull thrus, back ins, Cable TV, WiFi, restrooms, showers, laundry, handicap access, security, ice, propane, BBQ, clubhouse, game room, fitness center, swimming pool, picnic area, pool table, shuffleboard and golf cart rentals, and more.

Come experience a world of explorations! Conveniently located to all the action of Ellington Airport, NASA Space Center, League City, and your favorite beaches and only a short 25-minute drive to Downtown Houston.

For more info visit: www.passportamerica.com

Rated: 10 / 10* / 8.5

Total Sites: 202 (full hookups)

Amps: 30/50

Dump station: No

Reg. Rate: ~~\$65.00~~

PA Rate: \$32.50

Phone: (713) 609-1019

Visit, Follow or Like



Welcome New Park

Elevate Red Creek Perkinston, MS



Experience the peaceful surrounding of the creek ... relax and unwind. A quiet country setting on 40 acres on beautiful Red Creek. Enjoy two private sandbars great for swimming, fishing, kayaking or just enjoy nature, taking a hike down the trails, fragrant flowers. Wild turkey, deer, squirrels, birds, and ducks can often be found on the property. Spend the evenings relaxing and watching the creek leisurely go by or sit around the fire pit without a care in the world.

Elevate Red Creek is located only 25 minutes from Casinos and beaches (D'Iberville, Biloxi, Gulfport, MS). Open Year-Round! Secure campground with locked gates. Accommodate RVs up to 40 feet, bath house with hot showers and clean restrooms, Free Wi-Fi, playground, picnic tables, horseshoes, swimming, fishing, BBQ grills, nature watching, biking, and tent sites. Elevate also offers cabin rentals overlooking the creek.

Rated: N / A

Total Sites: 4 (full hookups)

Amps: 30/50

Dump station: Yes

Reg. Rate: ~~\$30.00~~

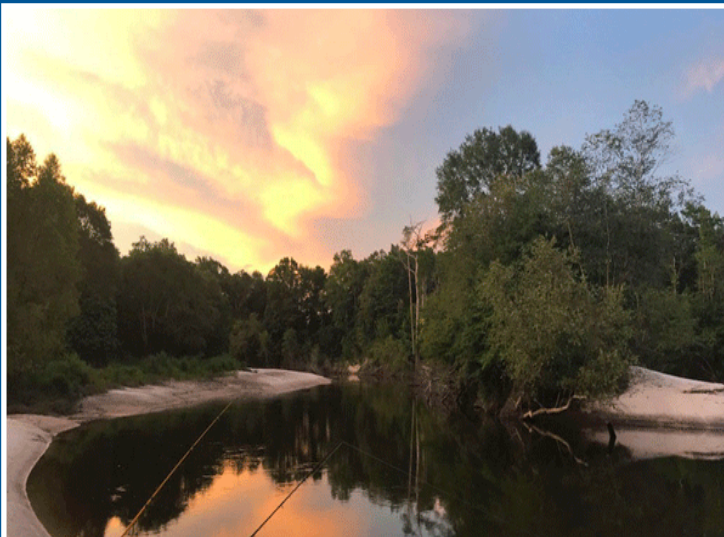
PA Rate: \$15

Phone: (601) 945-2888

Visit, Follow or Like



For more info visit: www.passportamerica.com



Life From Every Angle...

Text by Barbara Oliver
Photos by Mike & Barbara Oliver



It gathers dust as it sits on a shelf...my grandmother's Kodak camera. She loved to travel and was an avid photographer, just like George Eastman, founder of the Eastman Kodak company. His first camera, the Kodak, consisted of a box camera with 100 exposures. "You press the button, we do the rest" promised Eastman in 1888 with this advertising slogan for his Kodak camera. Although taking pictures has come a long way in today's world, my grandmother did her best in hers.

The youngest of three children, George Eastman was born to Maria Kilbourn and George Washington Eastman on July 12, 1854 in the village of Waterville, some 20 miles southwest of Utica, in upstate New York. His father died when George was only seven years old, leaving his mother to fend for herself and three children.

Eastman, called GE for

most of his life, was very self-reliant. He recorded every penny he earned and spent. He was saving money and also spending on travel, clothes and gifts. He gave away half his fortune in 1924. His gifts, which totaled more than \$75 million, went to such beneficiaries as the University of Rochester (of which the Eastman School of Music is a part) and the Massachusetts Institute of Technology. Even so, by 1927, Eastman Kodak was the largest U.S. company in the industry.

GE is best known for revolutionizing photography by putting the first simple camera into the hands of consumers. In so doing, he made what had been a cumbersome and complicated process easy to use and accessible to nearly everyone. Later he offered the first Brownie camera, which was intended for children. He was an inventor,

an entrepreneur, and one of the most important philanthropist, all rolled into one.

The George Eastman House International Museum of Photography in Film in Rochester, New York is the site of his former estate and is the world's oldest photography and film museum. The interior of the house is elaborate with skylights, winding staircases, beautiful furnishings and lush plants both inside and outside in the garden area. There are many exhibits, paintings and photographs that relate to the history of photography and to the works and life of George Eastman.

For more information call (585) 271-3361 or www.eastmanhouse.org



Unforgettable Adventures at Affordable Prices

PASSPORT  AMERICA CARAVANS

Let Us Take You There!

- Professional Caravan and Rally Staff
- Shows, Entertainment and Events
- Camping Fees and many Planned Meals Included
- Routes Provided
- Hour-by-Hour Itinerary Guide and more!



With more than 6 Dream RV Vacation Tours and Rallies to choose from, Passport America Caravans has a trip of a lifetime designed just for you

+ FUN!

800-440-3673



RALLY

**BUSHNELL HISTORICAL ESCAPADE
MARCH 1 – 4, 2020**



36 DAYS

**PRODIGIOUS FLORIDA
MARCH 9 - APRIL 13, 2020**



29 DAYS

**SOUTHWESTERN CORE OF AMERICA
APRIL 24 - MAY 22, 2020**



32 DAYS

**GREAT AMERICA RV CARAVAN
MAY 30 - JULY 1, 2020**



12 DAYS

**TENNESSEE TRAILBLAZER EXPRESS
JUNE 1 - 13, 2020**



38 DAYS

**GREAT ROCKY MOUNTAIN EXPLORATION
AUGUST 17 - SEPTEMBER 23, 2020**



MEGA RALLY

**MEGA RALLY IN THE BIG EASY
OCTOBER 12 - 18, 2020**

**CALL NOW FOR
MEMBER PRICING!**



**GREAT
AMERICAN
CARAVANS**

FOR COMPLETE TRIP DETAILS AND DETAILED ITINERARY GUIDE, PLEASE VISIT:

WWW.PASSPORTAMERICACARAVANS.COM

Passport Years Program™



*Welcome . . .
and congratulations!*

Your membership in Passport America gives you access to a special and rewarding insurance program.

Unlike any other program we have ever considered for members, our new Passport Years Program is in a world of its own. This specially-arranged program provides four important, meaningful insurance benefits that automatically increase in value - at no additional cost - based on your years of membership in Passport America.

The quality and value of the Passport Years Program is both refreshing and impressive, and I encourage you to take full advantage of this very generous program today.

Sincerely,

Vernon Simmons, President
Passport America



For a complete explanation of benefits (including costs, exclusions, limitations and terms of coverage) & enrollment, see our website at www.passportyears.com or call us toll free at 1-866-345-6930, Monday - Friday from 9:00 am - 5:00 pm Central Time.

More than just an Accidental Death Plan Insurance Benefit . . .

Include your family and enjoy four exclusive benefits that pay when you most need them, an Accidental Death Benefit, a Hospital Benefit, an Outpatient Benefit, and a Recuperation Benefit.

Your Benefits Increase and Your Premiums Don't!

Your specially-arranged premium rate for the SILVER Passport Years Plan is just \$34 semi-annually for Individual coverage or \$54 semi-annually when you include your family. If you choose the GOLD Passport Years Plan, your premium rate is \$67 semi-annually for Individual coverage or \$107 semi-annually for Family coverage.

Gold

Passport Years Plan

Accidental Death Benefit

1st Year Member	2nd Year Member	3rd Year Member	4th Year Member	5th Year Member	6th+ Year Member
\$ 40,000	\$ 44,000	\$ 48,000	\$ 52,000	\$ 56,000	\$ 60,000

Hospital Benefits

\$ 400/day	\$ 440/day	\$ 480/day	\$ 520/day	\$ 560/day	\$ 600/day
------------	------------	------------	------------	------------	------------

Outpatient Benefit

\$ 400	\$ 440	\$ 480	\$ 520	\$ 560	\$ 600
--------	--------	--------	--------	--------	--------

Recuperation Benefits

\$ 400/day	\$ 440/day	\$ 480/day	\$ 520/day	\$ 560/day	\$ 600/day
------------	------------	------------	------------	------------	------------

Silver

Passport Years Plan

Accidental Death Benefit

\$ 20,000	\$ 22,000	\$ 24,000	\$ 26,000	\$ 28,000	\$ 30,000
-----------	-----------	-----------	-----------	-----------	-----------

Hospital Benefits

\$ 200/day	\$ 220/day	\$ 240/day	\$ 260/day	\$ 280/day	\$ 300/day
------------	------------	------------	------------	------------	------------

Outpatient Benefit

\$ 200	\$ 220	\$ 240	\$ 260	\$ 280	\$ 300
--------	--------	--------	--------	--------	--------

Recuperation Benefits

\$ 200/day	\$ 220/day	\$ 240/day	\$ 260/day	\$ 280/day	\$ 300/day
------------	------------	------------	------------	------------	------------

Enroll Today!

Call Toll Free at 1-866-345-6930 anytime Monday-Friday from 9:00 a.m. - 5:00 p.m. Central Time or on-line at www.passportyears.com

Underwritten by Hartford Life and Accident Insurance Company, Simsbury, CT 06089
PY1107

7582 A2 (11028)

Christmas Snowball Cookies

Simply the easiest and the BEST! These traditional Christmas Snowball Cookies are buttery, with plenty of pecans and vanilla for a rich and flavorful melt-in-your-mouth shortbread cookie (also known as Russian Teacakes or Mexican Wedding Cookies). Never dry because the dough is made with granulated sugar, not confectioners' sugar like other recipes that make the cookies too dry. Everyone loves these classic nutty shortbread Christmas cookies!

INGREDIENTS:

1 cup unsalted butter, softened
5 tablespoons granulated sugar
2 teaspoons pure vanilla extract
¼ teaspoon fine-grain sea salt
2 cups unbleached all-purpose flour
2 cups finely chopped pecans
1½ cups confectioners' sugar, for
dusting cookies twice

DIRECTIONS

Using an electric stand mixer fitted with paddle attachment, or handheld electric mixer, cream together butter and sugar. Beat in the vanilla and salt. Gradually add flour; beating after each addition. Stir in the nuts; mix until fully incorporated. Divide dough in half and refrigerate in plastic food wrap for approximately 45 minutes.

Meanwhile, arrange oven rack in middle of oven and preheat to 350°F. Line two baking sheets with parchment paper; set aside. Place confectioners' sugar in a small bowl; set aside. Measure dough using a small, 1-inch spring-loaded scoop making sure each scoopful is level. Roll dough between palms of hands to achieve a small rounded ball.

Place dough balls 1½ inches apart on prepared baking sheets. Bake in preheated oven until the cookies are just beginning to brown, about 12 to 14 minutes. Do not overbake. The underside of the cookies should be only lightly browned. And the cookies should not crack—a sure sign of over baked tea cake cookies.

Cool cookies on baking sheets on wire racks for approximately 2 minutes. Remove cookies from baking sheets using a metal cookie spatula. While cookies are still warm, gently roll them in the confectioners' sugar. Place the sugar-coated cookies on wire racks to cool completely. Roll cookies once again in the confectioners' sugar.

Yield: Makes about 6 dozen small cookies when using 1-inch size cookie scoop as indicated in the recipe. Of course, larger cookie scoops will make larger sized cookies and yield less of them.



Please submit your favorite travel recipes! Include full recipe, photos, and author.

E-mail to april@passportamerica.net or mail to: RV America Magazine, c/o April Fillingim, 5713 Hwy 85 North, Crestview, FL 32536. Please send a self-addressed stamped envelope, if you would like your photos returned.

Salute to our Lifetime Members

Claude Sisson, NY
Roger Sisson, NY
Janice Sizemore, OH
Beth Skaggs, CA
Timothy Skelly, NY
Roger Skelton, FL
Beverly Skinner, ID
Matthew Skinner, NY
Perry Skinner, TX
Rolland Skinner, NE
Bill Skipworth, OR
Wayne Skiver, IN
Edward Skokan, CA
John Slagle, CO
Dm Slaten, KY
Andrea Slaugh, NY
Stanley Slaughter, NC
Melvin Slay, GA
Albert Slayton, MI
David Sleeper, NC
Thomas Sleys, FL
Ky Slickers, AZ
Joseph Slifko, CA
David Slivka, SD
Bill Sloan, OR
James Sloan, MI
James Sloan, FL
Dale Slocomb, TX
Harry Slomers, MI
David Slusher, OH
Edger E Smalley, MS
Terry Smigun, CA
Kevin Smit, NC
Allan Smith, NE
Alton Smith, FL
Arden Smith, ME
Arlo Smith, WA
Bill Smith, FL
Brent Smith, OH
Charles Smith, CA
Charles Smith, WA
Charles Smith, CA
Chris Smith, PA
Danny Smith, MO
Debbie Smith, CA
DelmarSmith, IL
Doug Smith, MO
Eileen Smith, CT
Ernest E Smith, TX
Frank Smith, NY
Garland Smith, TX
Garold Smith, KS

Gary Smith, AZ
Gary Smith, FL
Gene Smith, FL
Gene Smith, IN
Geraldine E Smith, TX
Gordon Smith, AL
Gordon Smith, NY
Gwen Smith, OK
Harold Smith, GA
James Smith, AR
James Smith, CO
Jayedene Smith, AK
Jean Smith, IL
Joseph Smith, OR
Karen Smith, KY
Ken Smith, FL
Larry Smith, VA
Laverne Smith, TX
Lawrence Smith, OR
Linda Smith, VA
Mark Smith, AZ
Matt Smith, TX
Merlyn J Smith, WA
Neil Smith, SD
Patricia Smith, NV
Paul Smith, MD
Ralph Smith, CO
Ray Smith, FL
Raymond Smith, FL
Richard Smith, TX
Richard Smith, NH
Richard Smith, OH
Ricky Smith, TX
Robert Smith, OR
Robert Smith, FL
Robert Smith, SD
Rodger Smith, AR
Rosalie Smith, FL
Steve Smith, AR
Stewart Smith, FL
Teresa Smith, GA
Thomas Smith, FL
Tom Smith, WY
Wayne Smith, NH
William Smith, FL
William Smith, MI
William Smith, MA
William Smith, FL
Willie Smith, AZ
Steve Smitha, IN
Rachael Smithey, CA
Gary Smotherman, TN

Douglas Smucker, AZ
Bill Smyth, AL
Joseph Smyth, FL
Dwayne Snider, OR
Robert Snider, AZ
Russell D Snider, ON
Harold Snipes, TX
Celeste Snyder, FL
Dave Snyder, IL
Thomas Snyder, TX
Timothy Snyder, FL
Frank Soeder, GA
Leanna Sohl, FL
Joseph Soles, VA
Edwin Solom, CA
Debroah Solomon, NC
Bill Solyan, CA
Donald Somazze, OH
Karen Son, TX
Percy Songe, LA
Richard Sonia, NC
Jerry Sonnenberg, CA
Michael Soots, NC
Fred Sotelo, AZ
Leland Souders, CA
Donald O Soukup, NV
James Soukup, MO
Douglas Soule, TN
Jerry Southard, AR
Lee Southerland, AR
Bryan Southern, FL
John Souza, CA
Richard Souza, CA
Dean P Sowers, CA
Kathy Spain, TX
Ron Spalding, TX
Matthew Sparger, FL
Leigh Spargur, AR
Craig Sparlin, CO
Barry Sparr, PA
Jim Spaulding, TX
Marvin Spayd, CO
Andrew Speakes, FL
Gary Spears, OH
Ralph Speas, TX
Delbert Speed, TX
John Speirs, FL
David Spell, AL
Charles Spellman, NC
Cynthia Spence, NV
Philip Spence, FL
Alfred Spencer, MI

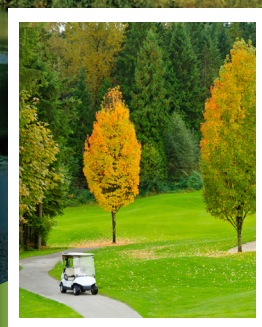
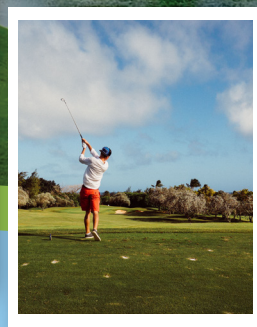
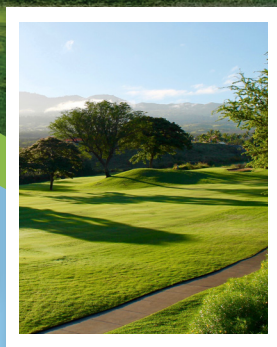
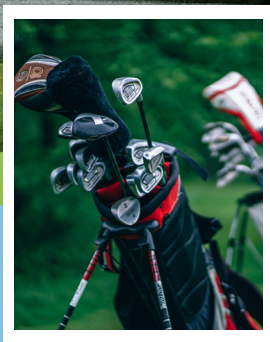
James Spencer, SD
RI Spencer, TX
Robert Spencer, FL
Ronald Spencer, FL
Anthony Speranzo, TX
Jim Sperling, MI
William Sperow, TN
Ed Spigle, VA
Charles Spiker, OR
Josephe Spiker, WA
Rick Spilman, FL
Martin Spitzenberger, TX
David Spitzer, WV
Kenneth Spoon, CA
Arlene Sporer, FL
Darlene Sprader, FL
Steven Spradley, FL
Marvin Sprinkle, OR
Hal Sproal, FL
Charles Sprouse, AZ
Charles Spurgeon, IL
Harold Squires, MI
Joseph Squires, MI
Richard St Amant, FL
Jerry St Martin, CA
Roddy St Yves, CA
Dewitt Staats, FL
Drue Stafford, NV
Raymond Stafford, WA
Wayne Stafford, CA
Edward Stage, WA
John Staggs, AL
Richard Stagnoli, LA
Ron Stahlhut, SD
Joe Stambaugh, IL
Eli Stamey, WA
Walter Stancliff, FL
Jimmie Stanford, FL
Charles Stanger, TX
Gale Stansell, WA
Clifton Stanton, TX
Joyce Stapf, PA
Gary Stark, MO
Bonnie Starkey, AZ
Chauncey Starkey, FL
Eugene Starkey, AZ
Von Starkey, GA
Wayne Starkey, AZ
Larry Starling, FL
William Staryk, VA
Michael Stasica, CO
Lynd Staten, VA



Golf Card[®]
INTERNATIONAL

SAVE UP TO **50%**

AT THOUSANDS OF QUALITY GOLF COURSES ALL ACROSS NORTH AMERICA



SIGN UP TODAY and Receive:

- **Golf Card Online National Directory with up to 50% Discounts off golf rates at Thousands of Top Courses**
- **Your ALL NEW Personalized embossed Golf Players Card**
- **FREE Handicap Index**
- **Plus much more!**

Only
\$59

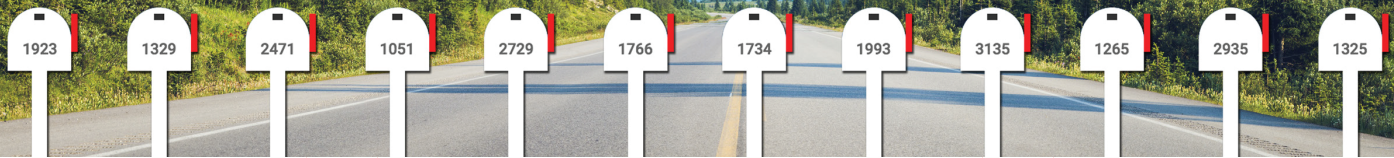


Join Now at WWW.GOLFCARD.COM or Call 1.800.321.8269



Mail Forwarding for RVers on the go!

**PASSPORT AMERICA MEMBERS
RECEIVE UP TO 25% DISCOUNT!**



★ ★ **AS LOW AS \$9 A MONTH!** ★ ★

**MyRVmail.com is the only mail-forwarding company
endorsed by PASSPORT AMERICA and GOOD SAM CLUB!**

MYRVMAIL BENEFITS

- ★ View front image of Envelopes & Packages
- ★ Request envelope scans and the contents inside
- ★ State-of-the art account management tools
- ★ Mail shipped on your schedule
- ★ Schedule auto shipments weekly, ect.
- ★ Activate/Deactivate account as needed
- ★ iPhone & Android app available
- ★ Share mailbox with entire family
- ★ NO limit on mail or packages received
- ★ NO fees for incoming packages
- ★ NO storage fees
- ★ Review mail by phone with a live person
- ★ Shred/Recycle unwanted mail
- ★ Email alerts for new mail arrival
- ★ Email alerts for Jury, Certified & Court summons
- ★ Email tracking for outgoing shipments
- ★ Auto postage refill

FLORIDA HOMEBASE

- ★ NO state income tax
- ★ NO personal property tax
- ★ NO tax on retirement pension checks
- ★ NO RV or vehicle inspections
- ★ NO emission testing
- ★ Drivers license valid for 9/ys (renewable online)
- ★ Low annual vehicle registration fees
- ★ Quality health insurance & healthcare in FL
- ★ Florida voted most beautiful & friendly parks
- ★ Discounts for FL residents to State Parks
- ★ Discounts for FL residents to Disney World

**SIGN UP ONLINE
TODAY!**

**Get a physical address in Florida at:
www.MyRVmail.com or call 1.800.844.3969**

PASSPORT AMERICA



Florida's Finest & FUN
Sunshine Caravan!

March 9 - April 13, 2020

Escape to **Prodigious FLORIDA** *and enjoy this "Fun in the Sun" RV tour*



Experience Florida like you've never experienced it **before!** Our unique Once-in-a-Lifetime adventure begins in coastal Alabama, ventures down to the tropical Florida Keys, and concludes in the beautiful and historic St. Augustine. Go back in time on the USS Alabama, take a trip to space at the Kennedy Space Center, and get up close and personal with Florida wildlife. **Plus, take the ride of your life through the Everglades on an airboat and much, much more!**

This One-of-a-kind Adventure of a Lifetime starts at only \$6,900 Two Person/1 RV and \$5,400 One Person/1 RV!

TOUR HIGHLIGHTS

- 36 Days - 1518 Miles
- The World's Greatest Beaches
- Historical Landmarks
- The Everglades
- World Renowned Attractions
- Dinner Cruise, Entertainment, and MUCH MORE!

Sign Up at www.PASSPORTAMERICACARAVANS.com
or Call **1-800-681-6810** NOW to Register!

My PASSPORT AMERICA

FREE MOBILE APPS!



My PASSPORT AMERICA

Easy access to Passport America
SAVINGS right from the road!

- Advanced campground, RV park search
- View your membership card in app
- Find nearby parks using your current location
- Trip Routing and more!

All right at your fingertips!

DOWNLOAD TODAY!



New Campgrounds

New Campgrounds from August 10 - November 10, 2019
Please check with each campground for more information.

ALABAMA

Lake Osprey RV Resort

12054 Gateway Dr, Elberta, AL 36530

www.lakeosprey.com

Rates: \$90.00, PA Rate: \$45.00

CALIFORNIA

Riverbend RV Park

17604 E Kings Canyon Rd

Sanger, CA 93657

www.theriverbendpark.com

Rates: \$45.00 - \$50.00

PA Rates: \$22.50 - \$25.00

FLORIDA

Aurora Acres RV Park

11240 N Northwood Dr,

Inglis, FL 34449

<https://auroraacresrvpark.com>

Rates: \$26.00 - \$33.00

PA Rates: \$13.00 - \$16.50

GEORGIA

Scenic Mountain RV Park & Campground

2686 Irwinton Rd

Milledgeville, GA 31061

www.scenicmountainrvpark.com

Rates: \$48.00, PA Rate: \$24.00

Yogi Bear's Georgia Jellystone Park

106 King St, Bremen, GA 30110

www.gajellystone.com

Rates: \$45.00 - \$65.00

PA Rates: \$22.50 - \$32.50

Trail Break RV Park & Campground

432 N Bannock St

Glenns Ferry, ID 83623

www.trailbreakrvpark.com

Rates: \$30.00, PA Rate: \$15.00

INDIANA

Last Resort Campground

4707 W 1300 S, Hanna, IN 46340

www.campplastresort.com

Rates: \$30.00 - \$35.00

PA Rates: \$15.00 - \$17.50

KANSAS

The Evergreen Inn-Motel & RV Park

20001 W US Hwy 54, Pratt, KS 67124

www.evergreeninn.biz

Rates: \$35.00, PA Rate: \$17.50

KENTUCKY

Holiday Hills Resort

Holiday Hills #1 Road

Eddyville, KY 42038

www.holidayhillsresortky.com

Rates: \$40.00, PA Rate: \$20.00

LOUISIANA

101 RV Park & Campground

537 Hwy 151 N

Calhoun, LA 71225

www.101rvparkandcampground.com

Rates: \$25.00, PA Rate: \$12.50

MISSISSIPPI

Elevate Red Creek

5106-A Vestry Rd

Perkinston, MS 39573

www.ElevateRedCreek.com

Rates: \$30.00, PA Rate: \$15.00

MONTANA

The Fort at 49

7795 Custer Frontage Rd

Custer, MT 59024

www.thefortat49.com

Rates: \$35.00 - \$40.00

PA Rates: \$17.50 - \$20.00

NORTH CAROLINA

Beaufort Waterway RV Park

329 Core Creek Rd 24

Beaufort, NC 28516

www.beaufortwaterwayrvpark.com

Rates: \$59.95 - \$79.95

Rates: \$29.98 - \$39.98

NEW YORK

Cooperstown Deer Run Campground

7489 State Hwy 80

Cooperstown, NY 13326

www.cooperstowndeerruncampgroundinc.com

Rates: \$45.00, PA Rate: \$22.50

OHIO

Sunset Springs RV Resort

3933 Hensing Rd

Bucyrus, OH 44820

www.campsunsetsprings.com

Rates: \$35.00 - \$65.00

PA Rates: \$17.50 - \$32.50

SOUTH CAROLINA

Turtle Creek Campground

2549 Overbrook Dr

Gaffney, SC 29341

www.turtlecreekcampground.com

Rates: \$50.00 - \$60.00

PA Rates: \$25.00 - \$30.00

SOUTH DAKOTA

Rondees Campground

911 E Kay Ave

Mitchell, SD 57301

www.rondeescampground.com

Rates: \$30.00 - \$35.00

PA Rates: \$15.00 - \$17.50

TEXAS

Camper's Paradise

4242 US 287

Sunset, TX 76270

www.campersparadisetexas.com

Rates: \$32.00, PA Rate: \$16.00

Jetstream RV Resort at NASA

14450 Ellington Park Dr

Webster, TX 77598

www.jetstreamrvresortatnasa.com

Rates: \$65.00, PA Rates: \$32.50

Western Sky RV Park

16221 Shepherd Rd

Atascosa, TX 78002

www.westernskyrv.com

Rates: \$50.00, PA Rates: \$25.00

VIRGINIA

Yogi Bear Jellystone Camp Resort

Emporia 2940 Sussex Dr

Emporia, VA 23847

www.campingbear.com

Rates: \$43.00 - \$49.00

PA Rates: \$21.50 - \$24.50

CANADA

ALBERTA

Millet Lions RV Campground

5410 50th Ave

Millet, AB T0C 1Z0

Rates: \$35.00, PA Rate: \$17.50

Campground Updates

Campground Updates from August 10 - November 10, 2019
Please check with each campground for more information.

ALABAMA

Gulf Coast RV Park

Gulf Shores, AL

New Rates: \$33.00, PA Rate: \$16.50
PA valid 3 nights, not valid weekends, holidays, & during special events (call for details). Not valid on reservations made from Apr - Sept. PA discount valid year-round for walk-ins. Call ahead for availability.

A-Okay RV Park

Dothan, AL

PA valid 3 nights max. Monthly & weekly rates available. Cash or check only. On call 24/7 for late night arrivals and assistance. Office hrs M-F 8AM-6:30PM, Sat 9AM-4:30PM, on call Sundays.
New Rates: \$30.00 - \$40.00
PA Rates: \$15.00 - \$20.00

ARIZONA

Cactus Gardens RV Resort, An Encore Resort.

Yuma, AZ

New Rates: \$45.00, PA Rate: \$22.50

Queen Valley RV Resort

Queen Valley, AZ

New Rates: \$67.57, PA Rate: \$33.79

Foothill Village RV Resort, An Encore Resort.

Yuma, AZ

New Rates: \$44.00, PA Rate: \$22.00

Viewpoint RV And Golf Resort, An Encore Resort.

Mesa, AZ

A maximum of 2 dogs per site
New Rates: \$77.00, PA Rate: \$38.50

Krazy K RV Park

Camp Verde, AZ. Adult Only Park.

PA valid up to 6 nights only. \$30.00 fee on cancelled reservations. PA cannot be combined with another discount. No RV's over 15 years old.

Val Vista Village RV Resort

Mesa, AZ

New Rates: \$55.00 - \$97.00
PA Rate: \$27.50 - \$48.50

Paradise RV Resort, An Encore Resort

Sun City, AZ

New Rates: \$52.00, PA Rate: \$26.00

San Pedro Resort Community

Benson, AZ

New Rates: \$42.00, PA Rate: \$21.00

Valley Vista RV Resort, An Encore Resort.

Benson, AZ

New Rates: \$33.00, PA Rate: \$16.50

Desert Paradise RV Resort, An Encore Resort.

Yuma, AZ

New Rates: \$45.00, PA Rate: \$22.50

Araby Acres RV Resort, An Encore Resort.

Yuma, AZ

New Rates: \$63.00, PA Rate: \$31.50

Golden Sun RV Resort, An Encore Resort.

Apache Junction, AZ

New Rates: \$43.00, PA Rate: \$21.50

Suni Sands RV Resort, An Encore Resort.

Yuma, AZ

New Rates: \$45.00, PA Rate: \$22.50

Mesa Verde RV Resort, An Encore Resort.

Yuma, AZ

New Rates: \$45.00, PA Rate: \$22.50

Mesa Regal RV Resort

Mesa, AZ. PA not valid Jan 1st thru

April 1st. Valid 7 nights on daily rate

New Rates: \$70.00, PA Rate: \$35.00

Sun Life RV Resort

Mesa, AZ. PA valid 7 nights on daily rate

New Phone: (480) 981-9500

New Rates: \$62.00, PA Rate: \$31.00

Monte Vista RV Resort, An Encore Resort.

Mesa, AZ

New Rates: \$63.00, PA Rate: \$31.50

Countryside RV Resort, An Encore Resort.

Apache Junction, AZ

New Rates: \$43.00, PA Rate: \$21.50

Good Life RV Resort

Mesa, AZ

New Rates: \$52.00, PA Rate: \$26.00

Apache Wells RV Resort

Mesa, AZ

New Rates: \$46.00, PA Rate: \$23.00

Fortuna De Oro RV Resort

Yuma, AZ

New Rates: \$48.00 - \$58.00

PA Rate: \$24.00 - \$29.00

Tradewinds RV Park

Golden Valley, AZ

New Rates: \$40.00 - \$45.00

PA Rate: \$20.00 - \$22.50

Rincon Country West RV Resort

Tucson, AZ

New Rates: \$55.00 - \$61.00

PA Rate: \$27.50 - \$30.50

Sundance 1 RV Resort

Casa Grande, AZ

New Rates: \$55.00, PA Rate: \$27.50

PA valid May, Oct, Nov & Dec.

Reservations required. Valid 6 nights max. Credit cards accepted.

Verde Valley RV, An Encore Resort

Cottonwood, AZ

New Rates: \$44.00, PA Rate: \$22.00

Foothills West RV Resort, An Encore Resort.

Casa Grande, AZ

New Rates: \$43.00, PA Rate: \$21.50

Grand Canyon Railway RV Park

Williams, AZ

New Rates: \$45.75 - \$50.75

PA Rate: \$22.88 - \$25.38

Fiesta Grande RV Resort, An Encore Resort.

Casa Grande, AZ

New Rates: \$43.00, PA Rate: \$21.50

Capri RV Resort, An Encore Resort

Yuma, AZ

New Rates: \$44.00, PA Rate: \$22.00

Rincon Country East RV Resort

Tucson, AZ

New Rates: \$51.00 - \$55.00

PA Rate: \$25.50 - \$27.50

Mesa Spirit RV Resort, An Encore Resort.

Mesa, AZ

New Rates: \$86.00, PA Rate: \$43.00

Voyager RV Resort, An Encore Resort

Tucson, AZ

New Rates: \$54.00, PA Rate: \$27.00

Campground Updates Continued

Campground Updates from August 10 - November 10, 2019

Please check with each campground for more information.

CALIFORNIA

Dutch Flat RV Resort

Dutch Flat / Gold Run, CA
New Rates: \$50.00, PA Rate: \$25.00

Sun and Fun RV Park

Tulare, CA
New Rates: \$60.00, PA Rate: \$30.00

Catalina Spa & RV Resort

Desert Hot Springs, CA
New Rates: \$59.95 - \$69.95
PA Rate: \$29.98 - \$34.98

Camp Kernville

Kernville, CA. Not valid May & Sept 30.

Pechanga RV Resort

Temecula, CA
New Rates: \$60.00, PA Rate: \$30.00
Reservations required thru online booking only using code PA2020 in notes. Discount applied at check in with valid membership card Mon thru Wed in Deluxe Back-In & Buddy Sites only. Not valid during holidays/special events.

Northport MH & RV Park

Lakeport, CA
New Rates: \$40.00, PA Rate: \$20.00

Golden Pines RV Resort and Campground.

Camp Connell, CA
PA valid Mon - Thur nights standard sites, one stay per month. Not valid holidays or with other discounts. 2 night min stay req for drop-ins & 3 night min req on adv reservations.
New Rates: \$48.00, PA Rate: \$24.00

COLORADO

Mountaintale RV Resort

Colorado Springs, CO
New Rates: \$57.50, PA Rate: \$28.75

La Mesa RV Park

Cortez, CO. PA valid one night. Drive up only. Call ahead to check availability. Must specify PA at time of check-in. Cash only. Not valid with other discount.
New Rates: \$42.00, PA Rate: \$21.00

Foot Of The Rockies RV Resort

Colorado Springs, CO
New Rates: \$42.00 - \$52.00
PA Rates: \$21.00 - \$26.00

Sky Ute Casino Resort

Ignacio, CO. Open April 1 - Nov 30 (weather permitting). Reservations recommended.
New Rates: \$43.00, PA Rate: \$21.50

FLORIDA

Ja-Mar Travel Park, Inc

Port Richey, FL
New Rates: \$56.00, PA Rate: \$28.00

Homosassa River RV Resort

Homosassa, FL
New Rates: \$45.00 - \$66.00
PA Rate: \$22.50 - \$33.00

Sun Lake RV Resort

Ruskin / Sun City Center, FL
New Rates: \$59.00 - \$79.00
PA Rate: \$29.50 - \$39.50

Fisherman's Cove

Palmetto / Terra Ceia Bay, FL
New Rates: \$79.00 - \$149.00
PA Rate: \$39.50 - \$74.50
PA valid 2 nights max.

Whispering Pines RV Park

Silver Springs, FL
Open year-round Mon-Sat. Call in advance for availability. 2 night minimum stay, 2 week maximum stay.

Lake Toho RV Resort

Saint Cloud, FL
New Rates: \$40.00 - \$50.00
PA Rate: \$20.00 - \$25.00

Barrington Hills, An Encore Resort

Hudson, FL
New Rates: \$42.00, PA Rate: \$21.00

Chiefland RV Park

Chiefland, FL. Adult Park. PA valid 3 nights max. See management for discounts on longer stays.
New Rates: \$42.00, PA Rate: \$21.00

Crystal Isles, An Encore Resort

Crystal River, FL
New Rates: \$47.00, PA Rate: \$23.50

Haines City RV & Mhp

Haines City, FL
New Rates: \$40.00 - \$50.00
PA Rate: \$20.00 - \$25.00

Bulow RV Resort, An Encore Resort

Flagler Beach, FL
New Rates: \$41.00 - \$47.00
PA Rate: \$20.50 - \$23.50

Clerbrook Resort, An Encore Resort

Clermont, FL
New Rates: \$39.00, PA Rate: \$19.50

Winter Garden RV Resort, An Encore Resort.

Winter Garden, FL
New Rates: \$51.00, PA Rate: \$25.50

Windward Isle RV And Mobile Home Park.

Sarasota, FL
New Rates: \$40.00 - \$60.00
PA Rate: \$20.00 - \$30.00
7 days max stay with PA discount. No dogs. Restrooms in club house & next to laundry room.

Fort Myers Beach RV Resort, An Encore Resort. Fort Myers, FL
New Rates: \$50.00, PA Rate: \$25.00

McGregor RV Park

Fort Myers, FL
Additional Phone: (239) 357-7098
PA discount valid 14 nights, see management for longer stays. Not valid Dec 1 thru Mar 31.

Old Town Campground

Old Town, FL.
Open Sept 21 - May 15.

River Vista RV Village

Ruskin, FL
New Rates: \$52.00 - \$64.00
PA Rate: \$26.00 - \$32.00
Open year-round! Reservations required. PA valid Apr 1 - Dec 3, 6 nights max.

Craig's RV Park

Arcadia, FL. Drive up accommodations only. PA not valid Jan 2 thru Mar 31. Valid one night. Members may stay additional nights for the PA rate plus an electric charge of \$2.50 per night, based on availability. Length of stay is based on availability. Discounts not valid during special events. Cash only. No refunds.

Sunshine Holiday Daytona, An Encore Resort.

Ormond Beach, FL
New Rates: \$47.00, PA Rate: \$23.50

Campground Updates Continued

Campground Updates from August 10 - November 10, 2019

Please check with each campground for more information.

FLORIDA (continued)

Toby's RV Resort, An Encore Resort
Arcadia, FL
New Rates: \$39.00, PA Rate: \$19.50

Clover Leaf Forest, An Encore Resort
Brooksville, FL
New Rates: \$52.00, PA Rate: \$26.00

Lake Magic, An Encore Resort
Clermont, FL
New Rates: \$44.00, PA Rate: \$22.00

Thousand Trails Orlando RV, An Encore Resort. Clermont, FL
New Rates: \$42.00, PA Rate: \$21.00

Southern Palms RV Resort, An Encore Resort. Eustis, FL
New Rates: \$44.00 - \$47.00
PA Rate: \$22.00 - \$23.50

Holiday Travel Park, An Encore Resort
Holiday, FL
New Rates: \$38.00, PA Rate: \$19.00

Sunshine Holiday RV Resort, An Encore Resort. Fort Lauderdale, FL
New Rates: \$45.00, PA Rate: \$22.50

Gulf Air RV Resort, An Encore Resort
Fort Myers Beach, FL
New Rates: \$50.00, PA Rate: \$25.00

Tropical Palms RV Resort, An Encore Resort. Kissimmee, FL
New Rates: \$54.00, PA Rate: \$27.00

Vacation Village, An Encore Resort
Largo, FL
New Rates: \$45.00, PA Rate: \$22.50

Breezeway Trailer Park & RV Park
Micco, FL
New Rates: \$40.00, PA Rate: \$20.00

Pioneer Village, An Encore Resort
North Fort Myers, FL
New Rates: \$48.00, PA Rate: \$24.00

Upriver RV Resort
North Fort Myers, FL
PA valid May 1 thru Dec 1. Valid 7 days max, not valid during holidays.

Panacea RV Park
Panacea, FL
New Rates: \$37.00 - \$40.00
PA Rate: \$18.50 - \$20.00

Highland Woods RV Resort, An Encore Resort. Pompano Beach, FL
New Rates: \$46.00, PA Rate: \$23.00

Gulf View RV Resort, An Encore Resort
Punta Gorda, FL
New Rates: \$42.00, PA Rate: \$21.00

Harbor Lakes RV Resort, An Encore Resort. Port Charlotte, FL
New Rates: \$45.00, PA Rate: \$22.50

Topics RV Resort, An Encore Resort
Spring Hill, FL
New Rates: \$46.00, PA Rate: \$23.00

Rambler's Rest RV Resort, An Encore Resort. Venice, FL
New Rates: \$54.00, PA Rate: \$27.00

Sunshine Travel, An Encore Resort
Vero Beach, FL
New Rates: \$45.00, PA Rate: \$22.50

Sunshine Village Resort
Webster, FL. 55+ Resort, young visitors/families are always welcome. All minor children must be accompanied by an adult. PA valid anytime.

Three Flags RV, An Encore Resort
Wildwood, FL. Reservations req. Must call (888) 318-1243 for reservations. Open year round! PA not valid Nov - Mar. Valid Sun thru Thur only.

Forest Lake Village, An Encore Resort
Zephyrhills, FL
New Rates: \$46.00, PA Rate: \$23.00

GEORGIA

Paradise Lake RV Park
Brookfield, GA
New Rates: \$40.00 - \$50.00
PA Rate: \$20.00 - \$25.00
Open year-round! Currently being developed; more amenities added soon.

Cross Creek Campground & Cabins
Mountain City, GA. PA valid Sun - Thur only, not valid holidays or special events.

Twin Oaks RV Park
Perry/ Elko, GA. PA valid every day of week, not valid Mar, Oct, special events or weather related incidents. 2 nights max.

IDAHO

The Jolley Camper RV and Cottages
Ashton, ID. Valid Sun - Thur only.
New Rates: \$40.00, PA Rate: \$20.00

ILLINOIS

O' Connell's Yogi Bear RV Resort, An Encore Resort. Amboy, IL
New Rates: \$57.00 - \$67.00
PA Rate: \$28.50 - \$33.50

Pine Country, An Encore Resort
Belvidere, IL
Open April 19th thru October 15th.

Sunset Lakes RV Resort
Hillsdale IL
New Toll Free: (855) 430-7243

INDIANA

Indian Lakes, An Encore Resort
Batesville, IN. Open May 1 - Nov1.
New Rates: \$52.00, PA Rate: \$26.00

Horseshoe Lakes, An Encore Resort
Clinton, IN
New Rates: \$49.00, PA Rate: \$24.50

Twin Mills RV Resort, An Encore Resort. Howe, IN
New Rates: \$39.00 - \$55.00
PA Rates: \$19.50 - \$27.50

KENTUCKY

Diamond Caverns, An Encore Resort
Park City, KY
New Rates: \$48.00, PA Rate: \$24.00

LOUISIANA

Three Oaks and a Pine RV Park
New Orleans, LA. PA not valid week before & week of Mardi Gras. Limited availability during holidays. Reservations by phone only. Drive-ups welcome. PA does not apply with an online reservation.

Campground Updates Continued

Campground Updates from August 10 - November 10, 2019

Please check with each campground for more information.

MASSACHUSETTS

Travelers Woods Of New England, Inc
Bernardston, MA

New Rates: \$27.00 - \$34.00

PA Rate: \$13.50 - \$17.00

PA not valid during holidays or holiday weekends or with other discounts. Pets must be on leash at all times, and shot records must be submitted at check-in.

Gateway To Cape Cod RV, An Encore Resort. Rochester, MA

New Rates: \$63.00 - \$75.00

PA Rate: \$31.50 - \$37.50

Old Chatham Road RV, An Encore Resort. South Dennis, MA

New Rates: \$64.00 - \$84.00

PA Rate: \$32.00 - \$42.00

Sturbridge RV, An Encore RV Resort
Sturbridge, MA

New Rates: \$52.00 - \$71.00

PA Rate: \$26.00 - \$35.50

MAINE

Mt Desert Narrows Camping, An Encore Resort. Bar Harbor, ME

New Rates: \$44.00 - \$58.00

PA Rate: \$22.00 - \$29.00

Patten Pond Camping, An Encore Resort. Ellsworth, ME

New Rates: \$40.00 - \$58.00

PA Rate: \$20.00 - \$29.00

Pumpkin Patch RV Resort

Hermon, ME

New Rates: \$44.00, PA Rate: \$22.00

Nere' Beach Campground

Old Orchard Beach, ME

New Rates: \$80.00, PA Rate: \$40.00

New Tent Rate \$70.00, PA Tent: \$35.00

Acadia Seashore Camping & Cabins

Sullivan, ME. Open May 20 to Oct 9.

PA not valid Jun 16 thru Labor Day Weekend. PA valid up to 2 nights.

Moody Beach RV, An Encore Resort
Wells, ME

New Rates: \$68.00 - \$76.00

PA Rate: \$34.00 - \$38.00

MICHIGAN

Kampvilla RV Park

Bear Lake, MI. Open Apr 15 - Oct 15. PA not valid July/Aug, & holiday weekends.

New Rates: \$34.00 - \$42.00

PA Rate: \$17.00 - \$21.00

Bear Cave, An Encore Resort

Buchanan, MI

New Rates: \$60.00, PA Rate: \$30.00

Horseshoe Lake Campground & Cabins

Gwinn, MI. Open all year! PA not valid on primitive & lakefront pull thru sites.

New Rates: \$35.00 - \$40.00

PA Rate: \$17.50 - \$20.00

Chocolay River RV and Campground

Marquette, MI

New Rates: \$45.00, PA Rate: \$22.50

St Clair, An Encore Resort

Saint Clair, MI

New Rates: \$46.00, PA Rate: \$23.00

Tiki RV Park & Campground

Saint Ignace, MI. Open last weekend in Apr - Oct 31. PA valid Sun - Thur, 4 nights.

Website: www.tikirvpark.com

New Rates: \$32.00 - \$42.00

PA Rate: \$16.00 - \$21.00

New Tent Rate: \$28.00, PA Tent: \$14.00

St Louis Campground

Saint Louis, MI

New Rates: \$30.00, PA Rate: \$15.00

MISSOURI

The Catfish Place Campground

Arbela, MO

New Phone: (660) 945-3895

New Address: 26410 US Hwy 136,

Arbela, MO 63432

I-49 RV Park

Archie, MO

New Rates: \$40.00, PA Rate: \$20.00

Branson View Campground

Branson, MO. Open year-round! PA valid up to 21 nights. Reservations

require a credit card to guarantee.

One night stay deposit when making reservation. 48 hours cancellation notice required

Countryside Campground

El Dorado Springs, MO

New Rates: \$25.00 - \$30.00

PA Rate: \$12.50 - \$15.00

Sharp RV Park

Saint Joseph, MO

New Rates: \$36.00, PA Rate: \$18.00

Rustic Meadows RV Park

Strafford, MO

New Rates: \$50.00, PA Rate: \$25.00

MISSISSIPPI

Bay St Louis RV Park

Bay St Louis, MS

New Rates: \$43.00 - \$48.00

PA Rate: \$21.50 - \$24.00

Cross City RV Park

Corinth, MS

New Rates: \$44.00 - \$48.00

PA Rate: \$22.00 - \$24.00

MONTANA

Rollins RV Park

Rollins, MT

New Rates: \$59.00, PA Rate: \$29.50

Open Apr - Oct. Partial open during winter months. PA valid April 1 thru May 31 & Oct 1 thru October 31. Valid Sun-Wed, 2 nights. No reservations with PA discount. Drive up accommodations only. Please call ahead to check availability.

NORTH CAROLINA

Forest Lake RV, An Encore Resort

Advance, NC

New Rates: \$71.00, PA Rate: \$35.50

Beaufort Waterway RV Park

Beaufort, NC. PA discount valid Mon - Wed nights only.

Stonyfork Creek RV Park

Candler, NC. Open year-round! PA not

valid in Oct or during special events.

Valid 3 nights max.

Cedar Island RV Park

Cedar Island, NC. PA on space

availability. Not valid during holidays

weeks/weekends & special events. Valid

on standard/water/elec sites only.

Campground Updates Continued

Campground Updates from August 10 - November 10, 2019

Please check with each campground for more information.

NORTH CAROLINA (continued)

Twin Lakes RV Resort, An Encore Resort

Chocowinity, NC

New Rates: \$64.00, PA Rate: \$32.00

Foothills Family Campground

Forest City, NC

New Rates: \$40.00, PA Rate: \$20.00

Walnut Hollow Campground

Hayesville, NC

New Rates: \$45.00, PA Rate: \$22.50

Green Mountain Park RV, An Encore Resort.

Lenoir, NC

New Rates: \$67.00, PA Rate: \$33.50

Lake Gaston RV, An Encore Resort

Littleton, NC

New Rates: \$57.00, PA Rate: \$28.50

Open March 30th - October 20th.

Goose Creek RV Resort, An Encore Resort.

Newport, NC

New Rates: \$70.00 - \$76.00

PA Rate: \$35.00 - \$38.00

NORTH DAKOTA

Jan's RV Park, LLC

Leeds, ND. Open April - Oct, weather permitting. PA valid 1 night.

Boots Campground

Medora, ND. Open April 1 - Dec 1 (weather permitting). PA valid 1 night max, not valid Jun 19 - 25. Reservations accepted online. No restroom/shower

Roughrider RV Resort

Minot, ND. Open year-round! PA not valid Jun - Sept 30, or week before & during Memorial Day weekend. Valid 1 night

NEBRASKA

Area's Finest Country View Campground

Ogallala, NE

New Rates: \$39.00, PA Rate: \$19.50

Area's Finest Country View Campground

Ogallala, NE

New Tent Rate: \$27.00, PA Tent: \$18.50

NEW HAMPSHIRE

Apple Hill Campground

Bethlehem, NH

New Rates: \$35.00, PA Rate: \$17.50

Newfound RV Park

Bridgewater, NH

New Tent Rate: \$29.00, PA Tent: \$14.50

Sandy Beach RV, An Encore Resort

Contoocook, NH. Open May 3rd - Oct 15

New Rates: \$42.00 - \$54.00

PA Rate: \$21.00 - \$27.00

Beaver Hollow Campground

Ossipee, NH

New Rates: \$50.00, PA Rate: \$25.00

Tuxbury Pond RV, An Encore Resort

South Hampton, NH

New Rates: \$61.00, PA Rate: \$30.50

NEW JERSEY

Chestnut Lake RV, An Encore Resort

Port Republic, NJ

New Rates: \$58.00, PA Rate: \$29.00

Frontier Campground

Seaville, NJ

New Tent Rate: \$30.00, PA Tent: \$15.00

Sea Pines RV, An Encore Resort

Swainton, NJ

New Rates: \$58.00, PA Rate: \$29.00

NEW MEXICO

Enchanted Trails RV Park & Trading Post

Albuquerque, NM

New Rates: \$37.00, PA Rate: \$18.50

NEVADA

Welcome Station RV Park

Wells, NV

New Rates: \$33.00, PA Rate: \$16.50

New Frontier RV Park

Winnemucca, NV

New Phone: (775) 621-5275

New Rates: \$35.00, PA Rate: \$17.50

Open year-round! PA valid 2 nights in 30 day period, not valid on pull thru sites.

NEW YORK

Rondout Valley, An Encore Resort

Accord, NY

New Rates: \$71.00, PA Rate: \$35.50

1000 Islands Campground

Alexandria Bay, NY

New Rates: \$44.00 - \$50.00

PA Rate: \$22.00 - \$25.00

Camp Bell Campground

Campbell, NY.

New Rates: \$36.00, PA Rate: \$18.00

Alpine Lake RV Resort, An Encore

Resort. Corinth, NY. Open May 4-Oct 14.

New Rates: \$66.00 - \$69.00

PA Rate: \$33.00 - \$34.50

Ausable River Campsite

Keeseville, NY

New Rates: \$50.00, PA Rate: \$25.00

Brennan Beach RV Resort, An Encore

Resort. Pulaski, NY

New Rates: \$66.00, PA Rate: \$33.00

Russell Brook Campsites

Roscoe / Cooks Falls, NY

New Tent Rates: \$40.00, PA Tent: \$20.00

OHIO

Kenisee Lake, An Encore Resort

Jefferson, OH

New Rates: \$47.00, PA Rate: \$23.50

Arrowhead Campground

New Paris, OH

New Rates: \$56.00, PA Rate: \$28.00

Country Acres Campground

Ravenna, OH

New Rates: \$40.00 - \$55.00

PA Rate: \$20.00 - \$27.50

Arrowhead Lake Campground

Williamstown, OH

New Rates: \$50.00 - \$60.00

PA Rate: \$25.00 - \$30.00

Wilmington RV Resort, An Encore

Resort. Wilmington, OH

New Rates: \$55.00

PA Rate: \$27.50

OKLAHOMA

Riverside RV Resort & Campground

Bartlesville, OK

New Rates: \$35.00, PA Rate: \$17.50

Campground Updates Continued

Campground Updates from August 10 - November 10, 2019

Please check with each campground for more information.

OREGON

Sawyers Rapids RV Park

Elkton, OR

New Rates: \$45.00, PA Rate: \$22.50

South Jetty RV Resort, An Encore Resort.

Florence, OR

New Rates: \$50.00, PA Rate: \$25.00

Rocky Point Resort

Klamath Falls, OR

New Rates: \$46.00, PA Rate: \$23.00

On The River Golf & RV Resort

Myrtle Creek, OR

New Rates: \$50.00, PA Rate: \$25.00

Pacific City RV, An Encore Resort

Pacific City, OR

New Rates: \$58.00, PA Rate: \$29.00

Paradise Cove RV Resort & Marina

Rockaway Beach, OR

New Rates: \$44.00, PA Rate: \$22.00

Seaside RV, An Encore Resort

Seaside, OR

New Rates: \$64.00, PA Rate: \$32.00

Whalers Rest RV, An Encore Resort

South Beach, OR

New Rates: \$58.00, PA Rate: \$29.00

Mt Hood RV Resort, An Encore Resort

Welches, OR

New Rates: \$57.00 - \$65.00

PA Rate: \$28.50 - \$32.50

PENNSYLVANIA

Sun Valley RV, An Encore Resort

Bowmansville, PA. Open Apr 5 - Oct 27.

New Rates: \$48.00, PA Rate: \$24.00

Gettysburg Farm RV, An Encore Resort

Dover, PA. Open Apr 12 - Oct 27

New Rates: \$61.00, PA Rate: \$30.50

Timothy Lake South RV, An Encore Resort,

East Stroudsburg, PA

New Rates: \$85.00, PA Rate: \$42.50

Snyder's Family Campground

Gaines, PA. Open Apr 15 - Oct 14. PA

not valid holidays/ holiday weekends.

Reservations & drive-ups welcome.

Hershey RV, An Encore Resort

Lebanon, PA

New Rates: \$67.00, PA Rate: \$33.50

Robin Hill RV, An Encore Resort

Lenhartsville, PA

New Rates: \$69.00, PA Rate: \$34.50

PA Dutch Country RV, An Encore Resort

Manheim, PA

New Rates: \$51.00, PA Rate: \$25.50

Pioneer Campground

Muncy Valley, PA

New Rates: \$46.00 - \$53.00

PA Rate: \$23.00 - \$26.50

Shawnee Sleepy Hollow Camp

Schellsburg, PA. Open Apr 15 - Oct 31.

New Rates: \$38.50 - \$44.50

PA Rate: \$19.25 - \$22.25

Appalachian RV Resort, An Encore Resort.

Shartlesville, PA

New Rates: \$46.00 - \$64.00

PA Rate: \$23.00 - \$32.00

Whispering Winds Campground

Sheffield, PA. 2 night min stay. Valid

Mon - Thur. Not valid holiday weeks.

Cash only. Must see PA card at arrival

Hemlock Campground & Cottages

Tobyhanna, PA

New Tent Rate: \$54.00, PA Tent: \$27.00

New Rates: \$59.00, PA Rate: \$29.50

SOUTH CAROLINA

Carolina Landing RV, An Encore Resort

Fair Play, SC

New Rates: \$39.00, PA Rate: \$19.50

The Oaks At Point South, A Thousand Trails Campground.

Yemassee, SC

New Rates: \$58.00, PA Rate: \$29.00

SOUTH DAKOTA

Camping 109 RV Park

Big Stone City, SD. Open May-Oct.

New Rates: \$44.00, PA Rate: \$22.00

Three Flags RV Park

Black Hawk, SD. Open Apr 1-Oct 15. PA

valid 3 nights. Not valid Jul 4 or Sturgis

Rally week..New Rates: \$35.00 - \$55.00

PA Rate: \$17.50 - \$27.50

Spot

Desmet, SD

New Rates: \$40.00, PA Rate: \$20.00

New Tent Rate: \$30.00, PA Tent: \$15.00

Directions: GPS: 44.380935N,

-97.546204W

Heartland RV Park And Cabins

Hermosa, SD. PA valid unlimited stay.

Holidays, Special Events & Sturgis

Rally rates vary from listed rates and PA

availability is limited (prior reservations

are required). PA 20% disc on Cabins.

Elk Creek RV Park Lodge & Resort

Piedmont, SD

New Rates: \$35.00 - \$50.00

PA Rate: \$17.50 - \$25.00

Lazy JD RV Park

Piedmont, SD. Open May 1 - Oct 1. PA not

valid Sturgis Week (week before/ after).

New Rates: \$44.00, PA Rate: \$22.00

TENNESSEE

Deer Run RV Resort

Crossville, TN

New Rates: \$45.00, PA Rate: \$22.50

Breckenridge RV Resort

Crossville, TN

New Rates: \$34.00 - \$36.00

PA Rate: \$17.00 - \$18.00

Tanbark Campground

Dickson, TN

New Rates: \$41.00, PA Rate: \$20.50

Creekside RV Park

Pigeon Forge, TN. Park closed Jan &

Feb. PA not valid Jun, July, Sept/Oct &

holidays/special events

New Rates: \$49.00, PA Rate: \$24.50

A Waldens Creek Campground

Pigeon Forge, TN

New Rates: \$42.00, PA Rate: \$21.00

Credit Cards are accepted over \$30.00.

Cherokee Landing, An Encore Resort

Saulsbery, TN

New Rates: \$38.00, PA Rate: \$19.00

Campground Updates Continued

Campground Updates from August 10 - November 10, 2019

Please check with each campground for more information.

TEXAS

Alamo Palms RV Resort, An Encore Resort, Alamo, TX
New Rates: \$50.00, PA Rate: \$25.00

Marshall's Landing RV Resort
Aransas Pass, TX
New Tent Rate: \$30.00, PA Tent: \$15.00

Lake Bastrop North Shore Park
Bastrop, TX. PA not valid Mar - Sept.
Valid Mon - Wed only.
New Rates: \$35.00
PA Rate: \$17.50

Black Rock Park
Buchanan Dam, TX
New Rates: \$40.00, PA Rate: \$20.00
PA not valid Mar - Sept, valid Mon - Wed

Quiet Texas RV Park - D'Hanis
D Hanis, TX. No office, call manager before arrival (830) 931-5777. PA valid 3 days. No restrooms/ showers
New Rates: \$45.00, PA Rate: \$22.50

Victoria Palms RV Resort, An Encore Resort. Donna, TX
New Rates: \$54.00, PA Rate: \$27.00

East View RV Ranch
Georgetown, TX
New Rates: \$37.00, PA Rate: \$18.50

Paradise Park, An Encore Resort
Harlingen, TX
New Rates: \$47.00, PA Rate: \$23.50

Tropic Winds RV Resort, An Encore Resort. Harlingen, TX
New Rates: \$46.00, PA Rate: \$23.00

Lakewood RV Resort, An Encore Resort
Harlingen, TX
New Rates: \$46.00, PA Rate: \$23.00

Hilltop Lakes Indian Wood Campground
Hilltop Lakes, TX. Open year-round. PA valid Sun - Thur 3 days.
New Tent Rate: \$16.50, PA Rate: \$8.25

Sheldon Lake RV Resort
Houston, TX. PA not valid Mar - Oct.
Valid Sun - Thur only, 1 night.

Heartland RV Park, Inc
Huntsville, TX
New Rates: \$30.00, PA Rate: \$15.00

Johnson Creek RV Resort & Park
Ingram, TX. DO NOT USE GPS. From El Paso, I-10 exit 488, go 9 miles E on Hwy 27, Park on right. From Kerrville, I-10 exit 505, take Harper Rd to S Hwy 27, Take Hwy 27 W 6 miles to Ingram, turn right on Hwy 27, go 4.75 miles, on left.
New Rates: \$52.00, PA Rate: \$26.00

Matagorda Bay Nature and RV Park
Matagorda, TX
New Rates: \$40.00 - \$50.00
PA Rate: \$20.00 - \$25.00

Paradise South RV Resort, An Encore Resort. Mercedes, TX
New Rates: \$47.00, PA Rate: \$23.50

Seldom Rest Ranch RV Park
Mission, TX
New Rates: \$30.00, PA Rate: \$15.00

Lake Tawakoni RV Resort, An Encore Resort. Point, TX
New Rates: \$49.00 - \$55.00
PA Rate: \$24.50 - \$27.50

Port Arthur RV Resort
Port Arthur, TX
New Rates: \$45.00 - \$50.00
PA Rate: \$22.50 - \$25.00

Circle W RV Ranch
Rockport, TX
New Rates: \$43.00 - \$48.00
PA Rate: \$21.50 - \$24.00

Rockport Retreat RV Resort
Rockport, TX.
Website: www.rockportretreatrv.com

Fun N Sun RV Resort, An Encore Resort
San Benito, TX
New Rates: \$46.00, PA Rate: \$23.00

Tropical Gardens RV Park & Resort
San Leon, TX
New Rates: \$35.00 - \$40.00
PA Rate: \$17.50 - \$20.00

Country Sunshine RV Resort, An Encore Resort. Weslaco, TX
New Rates: \$47.00, PA Rate: \$23.50

Southern Comfort RV Resort, An Encore Resort. Weslaco, TX
New Rates: \$47.00, PA Rate: \$23.50

Lake Whitney RV Resort, An Encore Resort. Whitney, TX
New Rates: \$45.00 - \$49.00
PA Rate: \$22.50 - \$24.50

UTAH

Ok RV Park & Canyonlands Stables
Moab, UT. PA valid 2 max days.
New Rates: \$49.00, PA Rate: \$24.50

VIRGINIA

Harbor View RV, An Encore Resort
Colonial Beach, VA
New Rates: \$46.00, PA Rate: \$23.00

Lynchburg RV, An Encore Resort
Gladys, VA
New Rates: \$48.00, PA Rate: \$24.00

Chesapeake Bay RV, An Encore Resort
Gloucester, VA
New Rates: \$64.00, PA Rate: \$32.00

Virginia Landing RV, An Encore Resort
Quinby, VA
New Rates: \$48.00 - \$50.00
PA Rate: \$24.00 - \$25.00

Williamsburg RV Resort & Campground, An Encore Resort. Williamsburg, VA
New Rates: \$63.00, PA Rate: \$31.50

VERMONT

Maple Grove Campground
Fairfax, VT. Open May 1-Oct 15.
New Rates: \$35.00 - \$40.00
PA Rate: \$17.50 - \$20.00

WASHINGTON

Beach RV Park
Benton City, WA
New Rates: \$42.30, PA Rate: \$21.15

Birch Bay RV, An Encore Resort
Blaine, WA
New Rates: \$55.00, PA Rate: \$27.50

Thousand Trails Chehalis RV, An Encore Resort. Chehalis, WA
New Rates: \$47.00 - \$52.00
PA Rate: \$23.50 - \$26.00

Kozy Kabins And RV Park
Conconully, WA
New Rates: \$34.00, PA Rate: \$17.00

Tall Chief RV Resort, An Encore Resort
Fall City, WA
New Rates: \$54.00 - \$60.00
PA Rate: \$27.00 - \$30.00

La Conner RV, An Encore Resort
La Conner, WA
New Rates: \$50.00 - \$63.00
PA Rate: \$25.00 - \$31.50

Campground Updates Continued

Campground Updates from August 10 - November 10, 2019

Please check with each campground for more information.

WASHINGTON (continued)

Leavenworth RV Resort, An Encore Resort. Leavenworth, WA
New Rates: \$55.00, PA Rate: \$27.50

Driftwood RV Park LLC
Long Beach, WA
New Rates: \$34.50 - \$49.50
PA Rate: \$17.25 - \$24.75

Thunderbird RV, An Encore Resort
Monroe, WA
New Rates: \$51.00 - \$54.00
PA Rate: \$25.50 - \$27.00

Willow Bay RV Resort & Marina
Nine Mile Falls, WA
New Rates: \$46.00, PA Rate: \$23.00

Oceana RV Resort, An Encore Resort
Ocean City, WA
New Rates: \$44.00, PA Rate: \$22.00

Bains' RV Park
Oroville WA
New Rates: \$35.00 - \$40.00
PA Rate: \$17.50 - \$20.00

Mardon Resort
Othello, WA
New Rates: \$46.00 - \$59.00
PA Rate: \$23.00 - \$29.50

Conestoga Quarters RV Park
Port Angeles, WA
New Rates: \$38.00, PA Rate: \$19.00

Crescent Bar RV Resort, An Encore Resort. Quincy, WA
New Rates: \$81.00, PA Rate: \$40.50

Winchester RV Park & Campground
Republic, WA
New Rates: \$37.00, PA Rate: \$18.50

Paradise RV, An Encore Resort
Silver Creek, WA
New Rates: \$50.00, PA Rate: \$25.00

Spectacle Lake Resort
Tonasket, WA
New Rates: \$38.00, PA Rate: \$19.00

WISCONSIN

Apple Creek Campground
De Pere, WI. Closed Oct 31 - Apr 1
New Rates: \$42.00, PA Rate: \$21.00

Fremont Jellystone Park Campground, An Encore Resort. Fremont, WI
New Rates: \$58.00 - \$100.00
PA Rate: \$29.00 - \$50.00

Yukon Trails Camping, An Encore Resort
Lyndon Station, WI
New Rates: \$58.00, PA Rate: \$29.00

Ox Creek Campground
Montello WI
New Rates: \$40.00 - \$45.00
PA Rate: \$20.00 - \$22.50

Plymouth Rock, An Encore Resort
Plymouth, WI
New Rates: \$45.00 - \$118.00
PA Rate: \$22.50 - \$59.00

Tranquil Timbers, An Encore Resort
Sturgeon Bay, WI
New Rates: \$48.00 - \$55.00
PA Rate: \$24.00 - \$27.50

Arrowhead Resort, An Encore Resort
Wisconsin Dells, WI. Open Apr 15-Oct 16.
New Rates: \$55.00 - \$71.00
PA Rate: \$27.50 - \$35.50

Yogi Bear TM Camp-Resort & Waterplayground. Wisconsin Dells, WI
New Rates: \$49.00 - \$129.00
PA Rate: \$24.50 - \$64.50

Chuck Wagon RV Park
Fort Laramie, WY
New Rates: \$45.00, PA Rate: \$22.50

CANADA

Beaver Dam Golf & RV Resort
Madden, AB
New GPS: 51.438383, -114.283367
New Rate: \$44.00, PA Rate: \$22.00

Morinville Heritage Lake RV Park
Sturgeon County, AB
New Rates: \$44.95 - \$46.95
PA Rate: \$22.48 - \$23.48

Qualicum Bay Resort
Qualicum Beach, BC
New Rates: \$40.00 - \$45.00
PA Rates: \$20.00 - \$22.50

Cedar Grove Campground
Gray Creek, BC
New Rates: \$40.00, PA Rate: \$20.00

Cultus Lake RV Resort, An Encore Resort. Lindell Beach, BC
New Rates: \$57.00 - \$60.00
PA Rates: \$28.50 - \$30.00

River Haven Campground
Tabusintac, NB
New Rates: \$30.00 - \$40.00
PA Rate: \$15.00 - \$20.00

Bridgetown Family Camping
Bridgetown, NS
New Rates: \$30.00 - \$50.00
PA Rate: \$15.00 - \$25.00

Rayport Campground
Mahone Bay, NS
New Rates: \$44.00, PA Rate: \$22.00.

North Shore RV Park
Carrying Place, ON
New Rates: \$55.00, PA Rate: \$27.50

Amazing Rocky Park Campground
Durham ON
New Rates: \$60.00, PA Rate: \$30.00

Lagoon Tent and Trailer Park
Huntsville, ON
New Rates: \$40.00 - \$49.00
PA Rate: \$20.00 - \$24.50

Rideau Acres Camping Resort
Kingston, ON
New Rates: \$50.75 - \$60.75
PA Rate: \$25.38 - \$30.38

Summer House Park
Miller Lake, ON
New Rates: \$59.00 - \$65.00
PA Rate: \$29.50 - \$32.50

Lakewood Christian Campground
Plympton Wyoming, ON
New Rates: \$50.00, PA Rate: \$25.00

Twin Shores Camping Area
Darnley, PE
New Rates: \$54.00 - \$75.00
PA Rate: \$27.00 - \$37.50

Harrington RV Park & Campground
Harrington, PE
New Rates: \$50.00, PA Rate: \$25.00

Camping Auclair
Saint-Jean-Baptiste, QC
New Rates: \$50.00, PA Rate: \$25.00

Camping La Cle des Champs RV Resort
Saint-Philippe de Laprairie QC
New Rates: \$63.00 - \$68.00
PA Rate: \$31.50 - \$34.00

Six Mile River Resort
Tagish, YT
New Rates: \$48.00, PA Rate: \$24.00



Cumbres Toltec Railroad

by Lazelle Jones

The options are several. This adventure can be a half-day or a full day. It can start either in Chama, NM or Antonito, CO but there is no option when it comes to having a good time. A great time is guaranteed! When taking a day trip on the Cumbres Toltec Railroad a wonderful, unique experience that is laced with the best visuals is guaranteed. Stepping back to a day and a time when steam locomotives were what helped power America to greatness, the coal fired locomotives used on the Cumbres Toltec are vintage the 1920's and the rail cars include

passenger coaches and open viewing platform cars with sides that are chest high. A surreal landscape greets you at every step of the way.

This narrow gauge rail line was built circa the 1880s. In its day, it began and ended in Denver and Durango, Colorado, as a rail line of more than 300 miles, and was one that supplied and moved commodities and passengers through Southern Colorado and Northwestern New Mexico. Today, the Cumbres Toltec Railroad is purely an excursion train that runs between Antonito, CO and Chama, NM through the

San Juan Mountains.

This adventure can be enjoyed between the months of May and the middle of October and can be booked for any of the seven days of the week. Early in the season, this is a scene right out of the movie "Sound of Music", where if you use your imagination you will see Julie Andrews and the Von Trapp children as she leads them through the alpine meadows that lie above timberline and run in every direction. During the summer months as the train works its way up, over, and then down the steep mountain





passes, you pass through tunnels that were carved through shear granite. You cross wooden trestle bridges that span wide canyons and mountain streams that rush at the 'speed of light' down to join the Rio Grande and the Conejos Rivers in the San Luis Valley below.

However, it is between the middle of September and the middle of October that the canyons, mountainsides, and the valleys below come alive made so by a blaze of color. Mostly yellow and gold, huge forests of Aspens (also called Quakies because of the fluttering visuals and the sound the leaves make when moved by the breeze) blanket the mountain side. They come alive as their hue morphs from a mild green to brilliant shades of gold

at the yellow end of the color spectrum. As you pass through the San Juan Mountains, the brilliance of these colors are a



kind of opiate that makes you turn your head to look at the next blast of color, even though you cannot imagine that the next

show of color can match what you have already seen. But it can and it does, and it continues to do so even though this appetite for color has been sated.

Near the top, after about a three hour train ride from Chama in the west or Antonito in the east, the coal fired steam locomotives meet at a stop called Osier. Here, everyone is served a 7-course Thanksgiving style dinner. Standard fare includes roast turkey or homemade meatloaf with mashed potatoes, stuffing, gravy, cranberry sauce, vegetable, fresh oven baked rolls, beverages, and a complete buffet of deserts. The food is served on tables so you can go back as many times as you like.

There is a gift shop in this state-of-the-art mountain lodge



type structure at the tops of the mountains, with gifts and curios of every ilk offered. Another option following dinner is to visit the steam locomotives that have towed you up the mountain. Here you can talk with the certified engineers and firemen who operate these powerful locomotives. Very obliging, they will answer all of your questions and make themselves available for photo ops. They never tire of such requests. The last option is to simply sit on the grass carpeted mountainside and bask in the warm sun that shines through the thin mountain air. Keep in mind this is 12,000-plus feet above sea

level.

When it's time for your adventure to continue, the engineer pulls on a rope inside the cab of the locomotive that delivers several short blasts from the steam whistle to let you know it's time to climb back aboard. There is a concession car among the mix of rail cars that offers beverages and snacks. And yes, even though this rail line takes you through pristine back country that remains unchanged since the beginning time, purchases in the concessions car can be completed using credit or debit cards.

The Cumbres Toltec Railroad experience is one that takes you back to another time, to days gone by when the wild, wild, west was being settled and the railroad was integral to that effort. So plan ahead for next summer and visit their website (www.cumbrestoltec.com). Here you can get detailed information about accommodations, campgrounds, and other adventures in both the Antonito and Chama areas. This is a "very" under explored and unique slice of who we are as Americans,

and it needs to be experienced. You won't be disappointed. All Aboard!





Camping Today Magazine

The Friendliest People in the World



Shared Experiences

Young or old, novice or experienced, tent camper or full-time RVer, FCRV has something for everyone.

Belonging to FCRV is like living in a good neighborhood where the folks next door, across the street, or up the road are real friends you can count on, except in FCRV that neighborhood spirit stretches all over the country! It's the sense of fun, friendship and the camaraderie of families sharing outdoor camping experiences that's made FCRV the largest non-profit, member-owned camping organization in the USA and Canada.

Programs: Conservation, Wildlife Campers Actively Moving Program (CAMP) (hiking, biking, chair exercise, etc.), Disaster & Safety Awareness Training (DASAT), Legislative Representation U.S. & Canada, Scholarship, Travelogues, Youth, Teen, Adult Activities, Retirees, Historian

Activities: National Campvention, Retiree Rally, Regional Campouts, State / Prov. Campouts, Local Chapter Campouts, Meetings, Outings

Discounts: Participating Campgrounds, Road/Care Emergency Road Service, Passport America, Hertz Car Rental & Sales, On The Road Again Insurance (Canadian insurance), RV Education 101, Family Campers & RVers Wellness Access Card

Associations: Amer. Recreation Coalition, U.S. Federation of Camping Clubs, RVIA

Membership Application

Family Campers and RVers • 4804 Transit Rd., Bldg. 2, Depew, NY 14043

1 enclose (Check One): (prices effective July 1, 2014 for new members)

Dues in U.S. currency are: ☐ \$35/1 yr
☐ \$68/2 yrs ☐ \$99/3 yrs ☐ \$560/Lifetime*

Dues in Canadian currency are: ☐ \$45/1 yr
☐ \$86/2 yrs ☐ \$129/3 yrs ☐ \$720/Lifetime*

* \$5 credit for each year of membership

FCRV will provide 6 issues of the organization's publication "Camping Today" each membership year. Decals and membership card will be included.

To join by phone, call (800) 245-9755 or (716) 668-6242

Name: _____
 Spouse: _____
 Address: _____
 City: _____ State: _____ Zip: _____
 Email: _____

How I heard about FCRV: _____

Family: _____ Adults _____ Children _____ Retirees

Please charge to my: ☐ MasterCard ☐ Visa

Account Number: _____

MC Interbank Number: (4 digits above name) _____

Expiration Date: _____

Signature: _____



Dedicated Volunteer Staff



www.fcrv.org



Family Values

Inspirational

Christmas Story

For the Man Who Hates Christmas

by Nancy W. Gavin

The short, inspirational Christmas story below reveals the true spirit and meaning of Christmas. It was originally published in the December 14, 1982 issue of *Woman's Day* magazine. This moving story inspired the creation of [The White Envelope Project](#), a caring nonprofit organization dedicated to developing the next generation of givers, civic leaders, and philanthropists. May this inspirational story remind us all of the true meaning of Christmas and giving during the holidays and throughout the year.

It's just a small, white envelope stuck among the branches of our Christmas tree. No name, no identification, no inscription. It has peeked through the branches of our tree for the past ten years.

It all began because my husband Mike hated Christmas. Oh, not the true meaning of Christmas, but the commercial aspects of it – overspending and the frantic running around at the last minute to get a tie for Uncle Harry and the dusting powder for Grandma – the gifts given in desperation because you couldn't think of anything else.

Knowing he felt this way, I decided one year to bypass the usual shirts, sweaters, ties and so forth. I reached for something special just for Mike. The inspiration came in an unusual way.

Our son Kevin, who was 12 that year, was on the wrestling team at the school he attended. Shortly before Christmas, there was a non-league match against a team sponsored by an inner-city church. These youngsters, dressed in sneakers so ragged that shoestrings seemed to be the only thing holding them together, presented a sharp contrast to our boys in their spiffy blue and gold uniforms and sparkling new wrestling shoes.

As the match began, I was alarmed to see that the other team was wrestling without headgear, a kind of light helmet designed to protect a wrestler's ears. It was a luxury the ragtag team obviously could not afford.

Well, we ended up walloping them. We took every weight class. Mike, seated beside me, shook his head sadly, "I wish just one of them could have won," he said. "They have a lot of potential, but losing like this could take the heart right out of them." Mike loved kids – all kids. He so enjoyed coaching little league football, baseball and lacrosse. That's when the idea for his present came.

That afternoon, I went to a local sporting goods store and bought an assortment of wrestling headgear and shoes, and sent them anonymously to the inner-city church. On Christmas Eve, I placed a small, white envelope on the tree, the note inside telling Mike what I had done, and that this was his gift from me.

Mike's smile was the brightest thing about Christmas that year. And that same bright smile lit up succeeding years. For each Christmas, I followed the tradition – one year sending a group of mentally handicapped youngsters to a hockey game, another year a check to a pair of elderly brothers whose home had burned to the ground the week before Christmas, and on and on.

The white envelope became the highlight of our Christmas. It was always the last thing opened on Christmas morning, and our children – ignoring their new toys – would stand with wide-eyed anticipation as their dad lifted the envelope from the tree to reveal its contents. As the children grew, the toys gave way to more practical presents, but the small, white envelope never lost its allure.

The story doesn't end there. You see, we lost Mike last year due to dreaded cancer. When Christmas rolled around, I was still so wrapped in grief that I barely got the tree up. But Christmas Eve found me placing an envelope on the tree. And the next morning, I found it was magically joined by three more. Unbeknownst to the others, each of our three children had for the first time placed a white envelope on the tree for their dad. The tradition has grown and someday will expand even further with our grandchildren standing to take down that special envelope.

Mike's spirit, like the Christmas spirit will always be with us. <https://www.weboflove.org/i/christmas-stories/>

AeroShield Wind Deflector

Towing a trailer or fifth wheel has a considerable effect on the aerodynamics of your vehicle. The turbulent air created between the front of your fifth wheel and the rear of your truck creates excess drag, which decreases stability and increases fuel consumption. Mediate those effects with this AeroShield Wind Deflector from Icon Direct. Requiring no drilling or modifications, the shield is mounted to the top of your vehicle. As the name would suggest, it deflects the wind above your towable, increasing your fuel economy and improves stability. The shield is adjustable so you can set the correct angle and can be folded down when not in use. For more information, visit www.icondirect.ca



Lap Sealant

Part of Dicor's three-part roofing system, this Lap Sealant is designed for use around the edges, vents and screw heads on the roof of your RV. This sealant prevents any unwanted weather from seeping in from the top down. The sealant adheres to many common materials, including vinyl, galvanized metal and fiberglass. The company sells a couple variations of this product, one designed for horizontal and one for vertical applications. The product comes in a variety of colors and can be applied with a caulking gun. The added UV protection means your color won't fade or deteriorate in the sun. It's no surprise the company says their sealant is one of the highest selling RV products today.



For more information, visit Dicor's website <https://dicorproducts.com/product/epdm-lap-sealants/>



Text by Barbara Oliver
Photos taken at the "Shack" in the Frontier Village

For one who reads, there is no limit to the number of lives that may be lived..." Louis L'Amour

Louis L'Amour grew up in the fading days of the American frontier. He was born Louis Dearborn LaMoore on March 22, 1908, in Jamestown, North Dakota. He was the last of seven children in the family of Dr. Louis Charles LaMoore and Emily Dearborn LaMoore.

When he was very young his grandfather, Abraham Truman Dearborn, came to live in a little house in back of the LaMoore's. He told Louis of the great battles in history and of his own experiences as a soldier in both the civil and Indian wars. Also, two of Louis' uncles had worked on ranches for many years, one as a manager and the other as an itinerate cowboy. It was in the company of such men that Louis was first exposed to the history and adventure of the American Frontier. Since 1816, there were 33 members of his family who were writers and wanting to be a

writer since the time he could walk, Louis felt he could be one too.

At the age of 15, he left

school to travel the world. While in his thirties, he began writing novels about life on the Western frontier. He changed the spelling



Louis L'Amour at three years old.

of his name when he started writing novels in the 1930s. His first successful novel was "Hondo" in 1954. John Wayne bought the rights and it was made into a movie. Through the years many other of his books were made into movies.

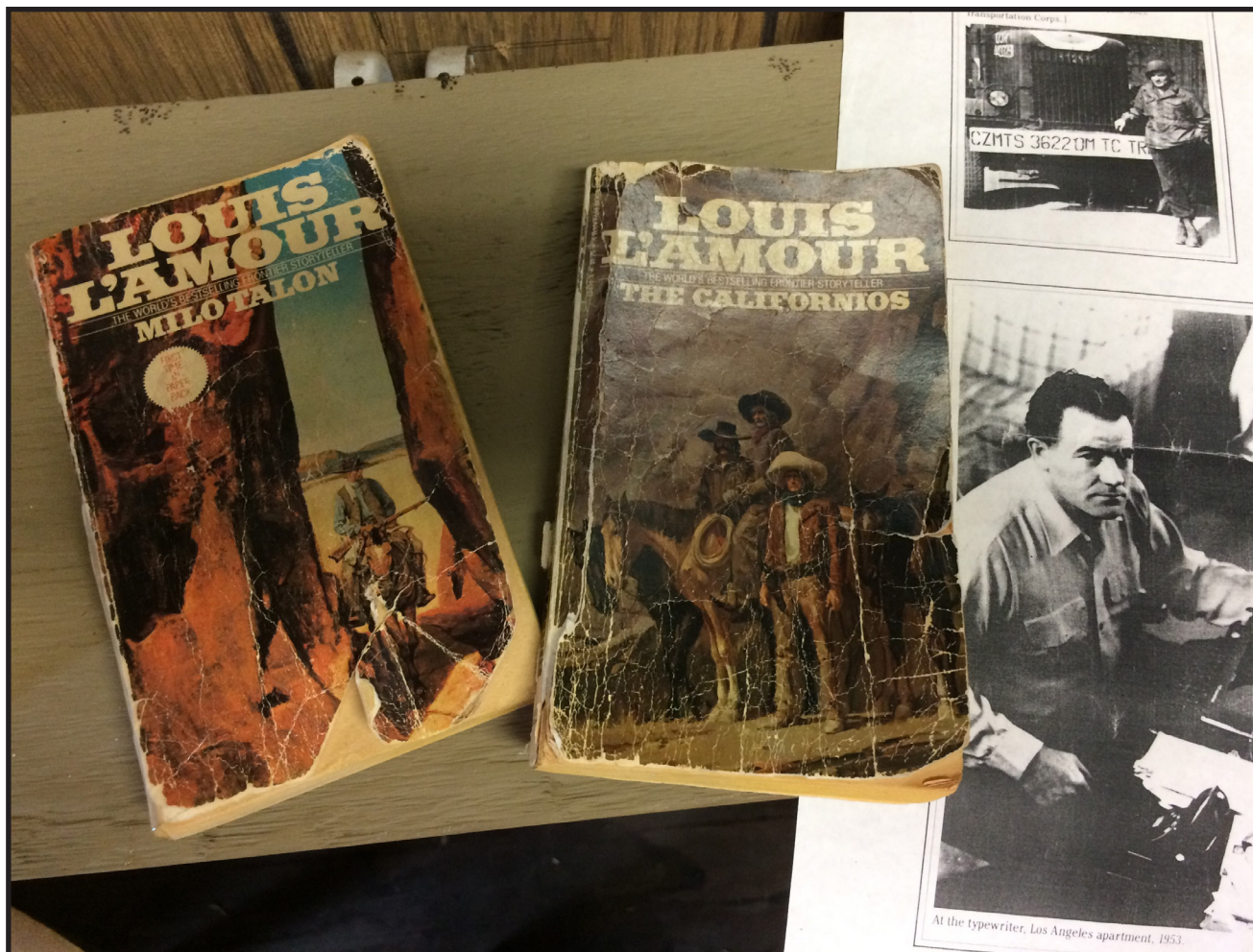
Louis was an American novelist and short-story writer. His books consisted primarily of Western novels (though he called his work "frontier stories"); however, he also wrote historical fiction, science fiction, non-fiction, as well as poetry and short-story collections. He wrote over 400 short stories and 100 novels, as well as numerous television scripts and screenplays. His books have been translated into 10 languages. At the time of his

death in 1988, there were over 200 million copies of his books in print.

Louis L'Amour was a modest man, slow to reveal what he really knew. He was presented an Honorary PhD by Jamestown College, as a testament to his literary and social contributions. He once said *"I write my books to be read aloud and I think of myself in that oral tradition."*

Jamestown, ND, just off Interstate 94, is the hometown of Louis L'Amour. There is a small historical frontier town set up with a post office, dentist office, church, antique store, print shop, and the cabin or shack as he called it, where Louis did his writing. Inside

are photos, books, his desk and chair, plus more memorabilia. Also found in Jamestown is the National Buffalo Museum, a live buffalo herd and the World's Largest Buffalo Monument.



FEEDBACK?

If you have something to share, to ask, or just want to say hello, please **send all correspondence**

to:

RV America Magazine
c/o April Fillingim
5713 Hwy 85 North
Crestview, FL 32536
april@passportamerica.net



We would love to hear from you.

You might even make it into the next issue of **RV America** magazine! **Thank you for your support.**

WHAT MONTH IS IT, Anyway?

DECEMBER

Bingo Month

12/7 - Pearl Harbor Day	12/25 - Christmas
12/12 - Poinsettia Day	12/26 - Boxing Day
12/13 - Friday the 13th	12/27 - National Fruitcake Day

JANUARY

National Blood Donor Month

1/1 - New Year's Day	1/10 - Houseplant Appreciation Day
1/4 - Trivia Day	1/20 - Martin Luther King's Birthday
1/5 - National Bird Day	1/25 - Opposite Day

FEBRUARY

American Heart Month

2/2 - Groundhog's Day	2/22 - Washington's Birthday
2/2 - Super Bowl Sunday	2/25 - Mardi Gras(Fat Tuesday)
2/17 - President's Day	2/26 - Ash Wednesday

Advertising Index

Escapees RV Club	Inside Back Cover
FCRV	25
FMCA	Back Cover
Great American Caravans	1 & 15
Golf Card International	13
My Passport America App	16
MyRVmail.com	18
Passport America Passport Years Insurance	12
Passport America Refer-A-Buddy Program	Inside Front Cover

Post Office Return Mail Forms 3547 to:

Passport America/RV America
 5713 Hwy 85 North
 Crestview, FL 32536
 800.681.6810

Advertising Representative

National Marketing Corporation
 Cara Holland
 Email: cara@passportamerica.net
 Fax: 850-398-6159 • Phone: 800.681.6810

ESCAPEES *RV* Club[®]

FREEDOM DRIVEN

DISCOUNTS • COMMUNITY • EDUCATION

**WE OFFER THE FREEDOM
TO DO SOMETHING DIFFERENT
WITH YOUR LIFE.**

**JOIN ESCAPEES
TODAY FOR ONLY:**

\$39⁹⁵



ESCAPEES *RV* Club[®]

A TOTAL SUPPORT NETWORK FOR ALL RVERS



www.escapees.com

888-757-2582

READY FOR MORE FREEDOM, FUN AND GOOD TIMES?

JOIN FMCA . . .

AN ORGANIZATION FOR FAMILIES WHO LOVE RVING



Tire Discounts

You could save hundreds on name-brand tires with FMCA's Tire Program.



Tech Benefits

Stay connected on the road with mobile internet offers from Verizon and Sprint + more.



Roadside Rescue

Never worry about RV travel again — roadside assistance for just \$74 per year!

FOR MORE INFORMATION:

Call 800-543-3622 or visit join.fmca.com/rvamerica19

